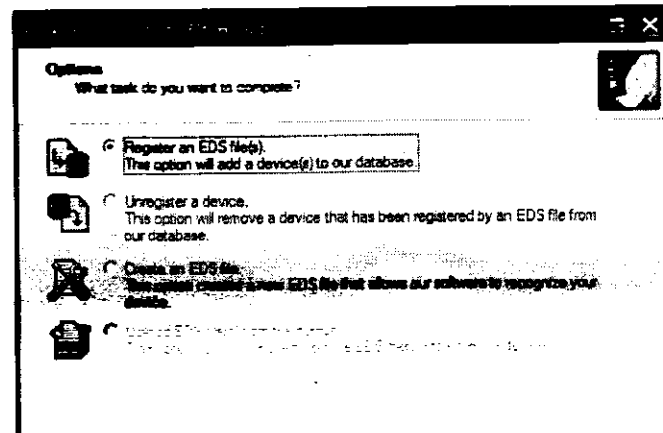
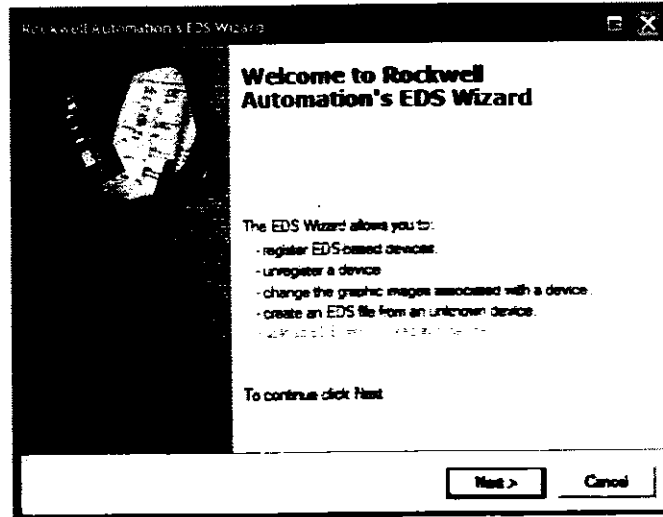
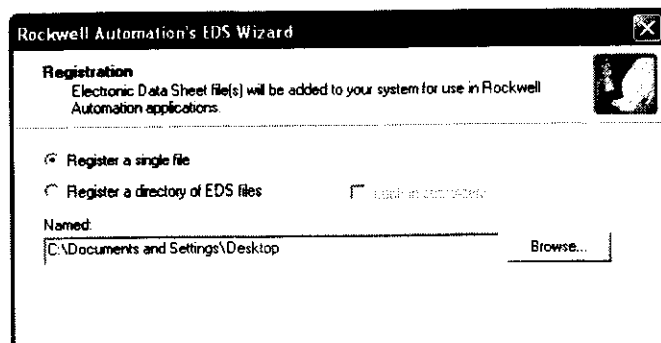


On RSLogix 5000



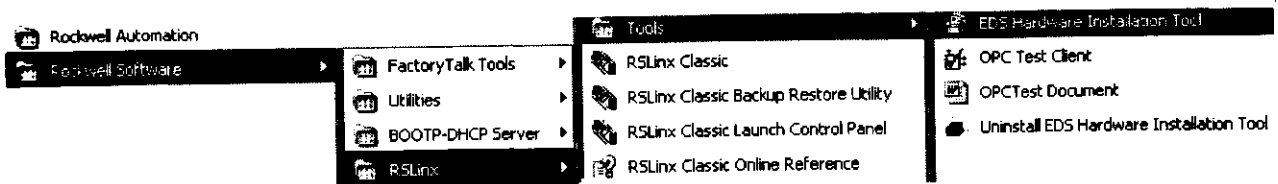
2. On the EDS Wizard screen that appears, choose Register a single file. Click Browse to navigate to the location of the EDS file you have downloaded. Then, click Next.



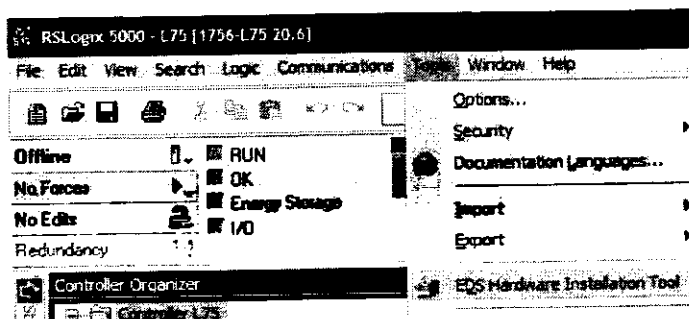
- Click Save when prompted and specify a folder location. Click Save again.

Install the EDS File

To install the current EDS file, you need to use the EDS Hardware Installation tool available from the Tools section of your RSLinx installation.

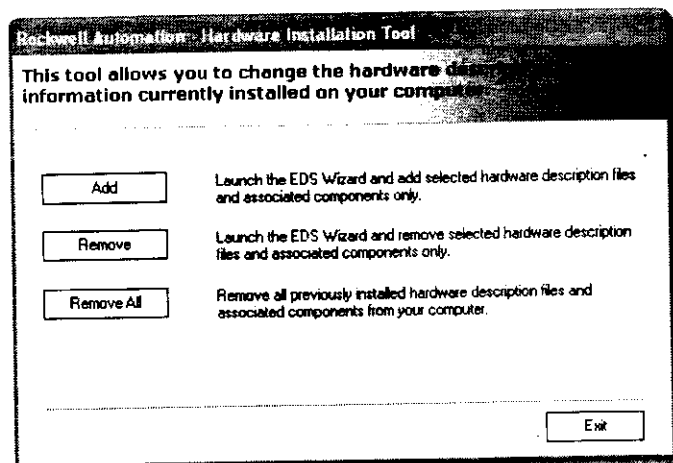


Alternatively, you can access the tool from the Tools menu of the RSLogix 5000 software.



- Launch the EDS Hardware Installation Tool.
 - If you accessed the tool through **RSLinx**, click Add. Proceed to step 2.
 - If you accessed the tool through **RSLogix 5000**, click Next on the Welcome screen. Then, choose the option Register an EDS file. Click Next. Proceed to step 2.

On **RSLinx**



SLC 500 EtherNet/IP Adapter Firmware Release Notes

Catalog Number 1747-AENTR

Topics	Page
About This Publication	1
Usage Requirements	1
Additional Resources	5

About This Publication

These release notes supplement the existing documentation supplied with your product.

Read this document before using 1747-AENTR EtherNet/IP Adapter with RSLogix 5000 version 20.

Usage Requirements

For users of RSLogix 5000 version 20, you must download and install the adapter module's current EDS file (Major Revision 1, Minor Revision 1) for EtherNet/IP.

To download the current EDS file:

1. Go to www.ab.com/networks/eds/.
2. On the Tools and Resources page, provide the following information:
 - Network: Ethernet/IP
 - Device Type: Communication Adapter
 - Bulletin Catalog Number: 1747-AENTR
 - Major Revision: 1
 - Minor Revision: 1
3. Click Search.
4. On the EDS File Search Results page that appears, click Download.

EDS FILE SEARCH RESULTS

Brand	Details & Download	Device Type	Product	Catalog Number	Major Rev.	Minor Rev.
Allen-Bradley	Details Download	Communication Adapter	1747-AENTR	1747-AENTR	1	1

SLC 500 Programmable Controllers, Digital, Analog, and Speciality I/O Modules

ATTENTION:

- Before installing, configuring, operating or maintaining this product, read this document and the documents listed in the Additional Resources section for installing, configuring, or operating equipment. Users should familiarize themselves with installation and wiring instructions in addition to requirements of all applicable codes, laws, and standards.
- Installation, adjustments, putting into service, use, assembly, disassembly, and maintenance shall be carried out by suitably trained personnel in accordance with applicable code of practice. In case of malfunction or damage, no attempts at repair should be made. The module should be returned to the manufacturer for repair. Do not dismantle the module.
- This equipment is certified for use only within the surrounding air temperature range of 0...60 °C (32...140 °F). The equipment must not be used outside of this range.
- Solid state equipment has operational characteristics differing from those of electromechanical equipment. Safety Guidelines for the Application, Installation and Maintenance of Solid State Controls, publication [SG-1.1](#), available from your local Rockwell Automation sales office or online at <http://www.rockwellautomation.com/literature> describes some important differences between solid state equipment and hard-wired electromechanical devices.

IMPORTANT Any illustrations, charts, sample programs, and layout examples shown in this publication are intended solely for the purposes of example. Since there are many variables and requirements associated with any particular installation, Rockwell Automation does not assume responsibility or liability for actual use based upon the examples shown in this publication.

North American Hazardous Location Approval

The following information applies when operating this equipment in hazardous locations: Products marked "CL I, DIV 2, GP A, B, C, D" are suitable for use in Class I Division 2 Groups A, B, C, D, Hazardous Locations and nonhazardous locations only. Each product is supplied with markings on the rating nameplate indicating the hazardous location temperature code. When combining products within a system, the most adverse temperature code (lowest "T" number) may be used to help determine the overall temperature code of the system. Combinations of equipment in your system are subject to investigation by the local authority having jurisdiction at the time of installation.

WARNING: EXPLOSION HAZARD

- Do not disconnect equipment unless power has been removed or the area is known to be nonhazardous.
- Do not disconnect connections to this equipment unless power has been removed or the area is known to be nonhazardous. Secure any external connections that mate to this equipment by using screws, sliding latches, threaded connectors, or other means provided with this product.
- Substitution of component may impair suitability for Class I, Division 2.
- If this product contains batteries, they must be changed only in an area known to be nonhazardous.

Informations sur l'utilisation de cet équipement en environnements dangereux: Les produits marqués "CL I, DIV 2, GP A, B, C, D" ne conviennent qu'à une utilisation en environnements de Classe I Division 2 Groupes A, B, C, D dangereux et non dangereux. Chaque produit est livré avec des marquages sur sa plaque d'identification qui indiquent le code de température pour les environnements dangereux. Lorsque plusieurs produits sont combinés dans un système, le code de température le plus défavorable (code de température le plus faible) peut être utilisé pour déterminer le code de température global du système. Les combinaisons d'équipements dans le système sont sujettes à inspection par les autorités locales qualifiées au moment de l'installation.

AVERTISSEMENT: RISQUE D'EXPLOSION

- Couper le courant ou s'assurer que l'environnement est classé non dangereux avant de débrancher l'équipement.
- Couper le courant ou s'assurer que l'environnement est classé non dangereux avant de débrancher les connecteurs. Fixer tous les connecteurs externes reliés à cet équipement à l'aide de vis, loquets coulissants, connecteurs filetés ou autres moyens fournis avec ce produit.
- La substitution de composants peut rendre cet équipement inadapté à une utilisation en environnement de Classe I, Division 2.
- S'assurer que l'environnement est classé non dangereux avant de changer les piles.

Environment and Enclosure

ATTENTION: This equipment is intended for use in a Pollution Degree 2 industrial environment, in overvoltage Category II applications (as defined in IEC publication 60664-1), at altitudes up to 2000 m (6562 ft) without derating. This equipment is considered Group 1, Class A industrial equipment according to IEC/CISPR Publication 11. Without appropriate precautions, there may be potential difficulties ensuring electromagnetic compatibility in other environments due to conducted as well as radiated disturbance.

ATTENTION: This equipment is supplied as open-type equipment. It must be mounted within an enclosure that is suitably designed for those specific environmental conditions that will be present and appropriately designed to prevent personal injury resulting from accessibility to live parts. The enclosure must have suitable flame-retardant properties to prevent or minimize the spread of flame, complying with a flame spread rating of 5VA, or be approved for the application if non-metallic. The interior of the enclosure must be accessible only by the use of a tool. Subsequent sections of this publication may contain additional information regarding specific enclosure type ratings that are required to comply with certain product safety certifications. In addition to this publication, see the following:

- Industrial Automation Wiring and Grounding Guidelines, publication [1770-4.1](#) for additional installation requirements.
- NEMA 250 and IEC 60529, as applicable, for explanations of the degrees of protection provided by different types of enclosures.

ATTENTION: Do not install this product until you read the documentation in your local language. Go to <http://www.rockwellautomation.com/literature> or contact your local sales office or Rockwell Automation representative.

ATENÇÃO: Não instale este produto antes de ler os documentos em sua língua. Clique <http://www.rockwellautomation.com/literature> ou entre em contato com o escritório ou representante da Rockwell Automation regional.

ATTENTION: N'installez pas ce produit tant que vous n'avez pas lu la documentation dans votre langue locale. Rendez-vous sur le site <http://www.rockwellautomation.com/literature> ou contactez votre agence commerciale ou votre représentant Rockwell Automation local.

ATTENZIONE: Non installare questo prodotto senza prima avere letto la documentazione nella propria lingua. Consultare la pagina web <http://www.rockwellautomation.com/literature> oppure contattare l'ufficio commerciale o il rappresentante Rockwell Automation di zona.

ACHTUNG: Bitte installieren Sie dieses Produkt erst, nachdem Sie sich die Produktdokumentation in Ihrer jeweiligen Sprache durchgelesen haben. Gehen Sie zu <http://www.rockwellautomation.com/literature> oder nehmen Sie Kontakt mit Ihrem lokalen Vertriebsbüro bzw.

ATENCIÓN: No instale este producto antes de leer los documentos en su idioma. Para hacerlo, haga clic en <http://www.rockwellautomation.com/literature> o póngase en contacto con su oficina o representante de Rockwell Automation regional.

注意: 各国語版の資料をお読みになるまでは、この製品を取付けないでください。資料を入手するには、<http://www.rockwellautomation.com/literature> にアクセスするか、ロックウェル・オートメーションまたは販売代理店までご連絡ください。

주요: 반드시 해당 국가의 언어로 본 문서를 숙독한 후 이 제품을 설치하십시오. <http://www.rockwellautomation.com/literature> 를 방문하거나 해당 국가의 대리점 또는 지사 에 연락하시기 바랍니다.

请注意: 在您阅读当地语言版的文档之前不要安装本产品。请登录 <http://www.rockwellautomation.com/literature> 或者联系您的本地办公室或罗克韦尔自动化销售代表获取本文档。

Some SLC 500 products may contain sealed lithium battery which may need to be replaced during the life of the product. For instructions on the removal and replacement of the battery, refer to SLC 500 Modular Hardware Style User Manual, publication [1747-UM011](#). At the end of its life, the battery should be collected separately from any unsorted municipal waste. The collection and recycling of batteries helps protect the environment and contributes to the conservation of natural resources as valuable materials are recovered.

Rockwell Automation Support

Rockwell Automation provides technical information on the Web to assist you in using its products. At <http://support.rockwellautomation.com>, you can find technical manuals, a knowledge base of FAQs, technical and application notes, sample code and links to software service packs, and a MySupport feature that you can customize to make the best use of these tools.

For an additional level of technical phone support for installation, configuration, and troubleshooting, we offer TechConnect support programs. For more information, contact your local distributor or Rockwell Automation representative, or visit <http://support.rockwellautomation.com>.

Installation Assistance

If you experience a problem within the first 24 hours of installation, please review the information that's contained in this manual. You can also contact a special Customer Support number for initial help in getting your product up and running.

United States	1.440.646.3434 Monday – Friday, 8 a.m. – 5 p.m. EST
Outside United States	Please contact your local Rockwell Automation representative for any technical support issues.

New Product Satisfaction Return

Rockwell Automation tests all of its products to ensure that they are fully operational when shipped from the manufacturing facility. However, if your product is not functioning and needs to be returned, follow these procedures.

United States	Contact your distributor. You must provide a Customer Support case number (call the phone number above to obtain one) to your distributor in order to complete the return process.
Outside United States	Please contact your local Rockwell Automation representative for the return procedure.

Rockwell Automation, Allen-Bradley, SLC, RSLogix 5000, RSLinx, and TechConnect are trademarks of Rockwell Automation, Inc.

Trademarks not belonging to Rockwell Automation are property of their respective companies.

Rockwell Otomasyon Ticaret A.Ş., Kar Plaza İş Merkezi E Blok Kat:6 34752 İçerenköy, İstanbul, Tel: +90 (216) 5698400

www.rockwellautomation.com

Power, Control and Information Solutions Headquarters

Americas: Rockwell Automation, 1201 South Second Street, Milwaukee, WI 53204-2496 USA, Tel: (1) 414.382.2000, Fax: (1) 414.382.4444

Europe/Middle East/Africa: Rockwell Automation, Vorstlaan/Boulevard du Souverain 36, 1170 Brussels, Belgium, Tel: (32) 2 663 0600, Fax: (32) 2 663 0640

Asia Pacific: Rockwell Automation, Level 14, Core F, Cyberport 3, 100 Cyberport Road, Hong Kong, Tel: (852) 2887 4788, Fax: (852) 2508 1846

Publication 1747-RN656A-EN-P - January 2012

PN-136659

Copyright © 2012 Rockwell Automation, Inc. All rights reserved. Printed in the U.S.A.

Additional Resources

Resource	Description
SLC 500 Systems Selection Guide, publication 1747-SG001	Provides specifications and selection criteria for SLC applications.
SLC 500 8-Point Analog Output Module User Manual, publication 1746-UM026	Provides information on how to install, configure, program, and use SLC 500 I/O modules.
SLC 500 Analog Input Modules User Manual, publication 1746-UM001	
SLC 500 Analog Input Modules User Manual, publication 1746-6.8	
SLC 500 Basic and Basic-T Modules User Manual, publication 1746-UM004	
SLC 500 4-Channel Analog I/O Modules User Manual, publication 1746-UM005	
SLC 500 4-Channel Thermocouple/mV Input Module User Manual, publication 1746-UM007	
SLC 500 EtherNet/IP Adapter User Manual, publication 1747-UM076	Provides information on how to install, configure, program, and use the SLC 500 EtherNet/IP Adapter.
SLC 500 Modular Hardware Style User Manual, publication 1747-UM011	Provides information on how to install, configure, program and use SLC 500 programmable controllers.
SLC 500 EtherNet/IP Adapter Installation Instructions 1747-INS21	Provides information on how to install the SLC 500 EtherNet/IP Adapter.
Allen-Bradley I/O Wiring Diagrams, publication CIG-WD001	Provides wiring guidelines for I/O modules.
Industrial Automation Wiring and Grounding Guidelines, publication 1770-4.1	Provides general guidelines for installing a Rockwell Automation industrial system.
Product Certification website, http://www.ab.com	Provides declarations of conformity, certificates, and other certification details.

To view or download product publications, go to <http://www.rockwellautomation.com/literature> and search documents under I/O. To order paper copies of technical documentation, contact your local Rockwell Automation distributor or sales representative.

Allen-Bradley, Rockwell Automation, and SLC are trademarks of Rockwell Automation, Inc.

Trademarks not belonging to Rockwell Automation are property of their respective companies.

Rockwell Otomasyon Ticaret A.Ş., Kar Plaza İş Merkezi E Blok Kat:6 34752 İçerenköy, İstanbul, Tel: +90 (216) 5698400

www.rockwellautomation.com

Power, Control and Information Solutions Headquarters

Americas: Rockwell Automation, 1201 South Second Street, Milwaukee, WI 53204-2496 USA, Tel: (1) 414.382.2000, Fax: (1) 414.382.4444

Europe/Middle East/Africa: Rockwell Automation, Vorstaan/Boulevard du Souverain 36, 1170 Brussels, Belgium, Tel: (32) 2 663 0600, Fax: (32) 2 663 0640

Asia Pacific: Rockwell Automation, Level 14, Core F, Cyberport 3, 100 Cyberport Road, Hong Kong, Tel: (852) 2887 4788, Fax: (852) 2508 1846

Publication 1747-PC915B-EN-P - December 2011

Supersedes Publication 1747-PC915A-EN-P - June 2011

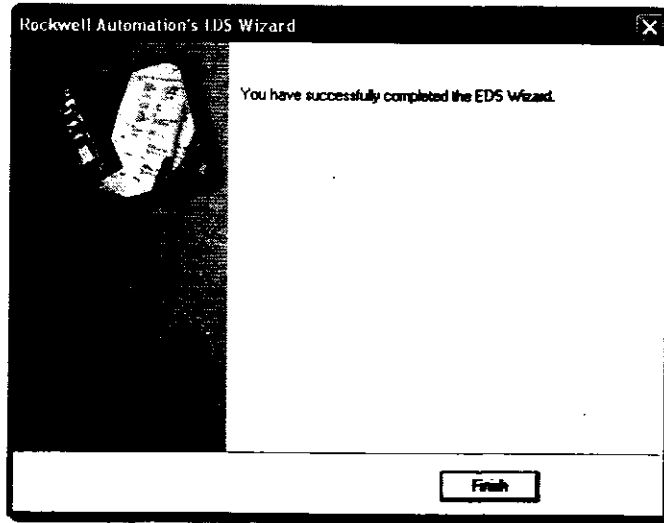
PN-124448

Copyright © 2011 Rockwell Automation, Inc. All rights reserved. Printed in the U.S.A.

Notes:

Notes:

6. A message appears indicating that you have successfully completed the EDS Wizard. Click Finish.



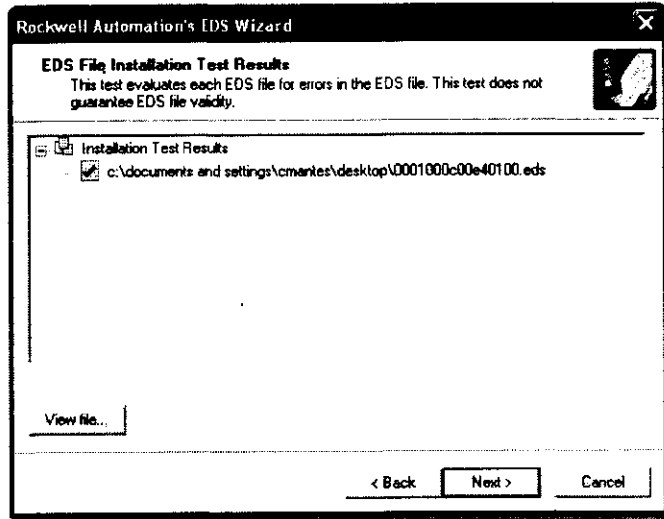
Additional Resources

These documents contain additional information concerning related Rockwell Automation products.

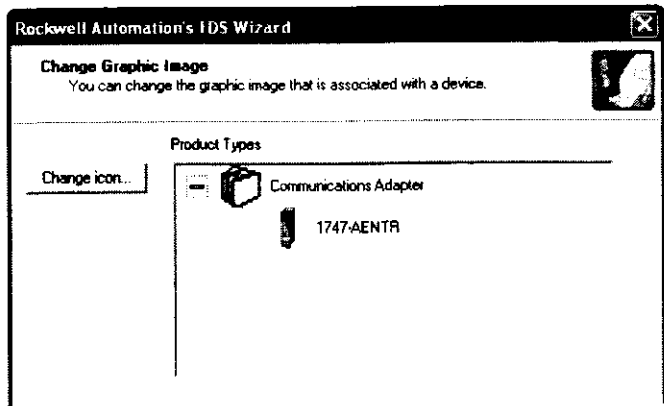
Resource	Description
SLC 500 EtherNet/IP Adapter Installation Instructions, publication 1747-IN521	A more detailed description of how to install your SLC 500 EtherNet/IP Adapter.
SLC 500 EtherNet/IP Adapter User Manual, publication 1747-UM076	A more detailed description of the features and usage of your SLC 500 EtherNet/IP Adapter.
Industrial Automation Wiring and Grounding Guidelines, publication 1770-4.1	Provides general guidelines for installing a Rockwell Automation industrial system.
Product Certifications website, http://www.ab.com	Provides declarations of conformity, certificates, and other certification details.

You can view or download publications at <http://www.rockwellautomation.com/literature/>. To order paper copies of technical documentation, contact your local Rockwell Automation distributor or sales representative.

3. The EDS Wizard briefly evaluates the EDS File for any errors. Then, the EDS File Installation Test Results screen appears. To view the properties of the downloaded file, you can select the file, then click View File. Click Next.



4. The next screen allows you to change the graphic image for your device. To do so, select the device, then click Change Icon. Choose an icon from the Rockwell Automation Icon Library. Click OK. Then, click Next.



5. The Final Task Summary screen appears indicating that you are about to register your device. Click Next.